



WESTLAKE CENTER

4555 Lake Forest Drive
Blue Ash, Ohio 45242

BlueAshMasonOfficeSpace.com



BUILDING HIGHLIGHTS



6 stories



Free on-site fitness center



180,578 SF



50-person conference center on campus



Ample parking



30-person meeting room



Walking distance to Summit Park, restaurants, and other Blue Ash amenities

Lake Forest Campus

The tenants of Lake Forest Campus enjoy the unique amenities of both buildings. Westlake Center's fitness center provides 24/7 card reader access to tenants, and Lake Forest's accommodating conference room comfortably seats 50 people. Both buildings enjoy modern cafe spaces equipped with WiFi and flat screen TVs, and scenic patio seating by the lake.

Finished tenant spaces allow for prospective tenants to visualize their office with high-end finishes and modern designs.



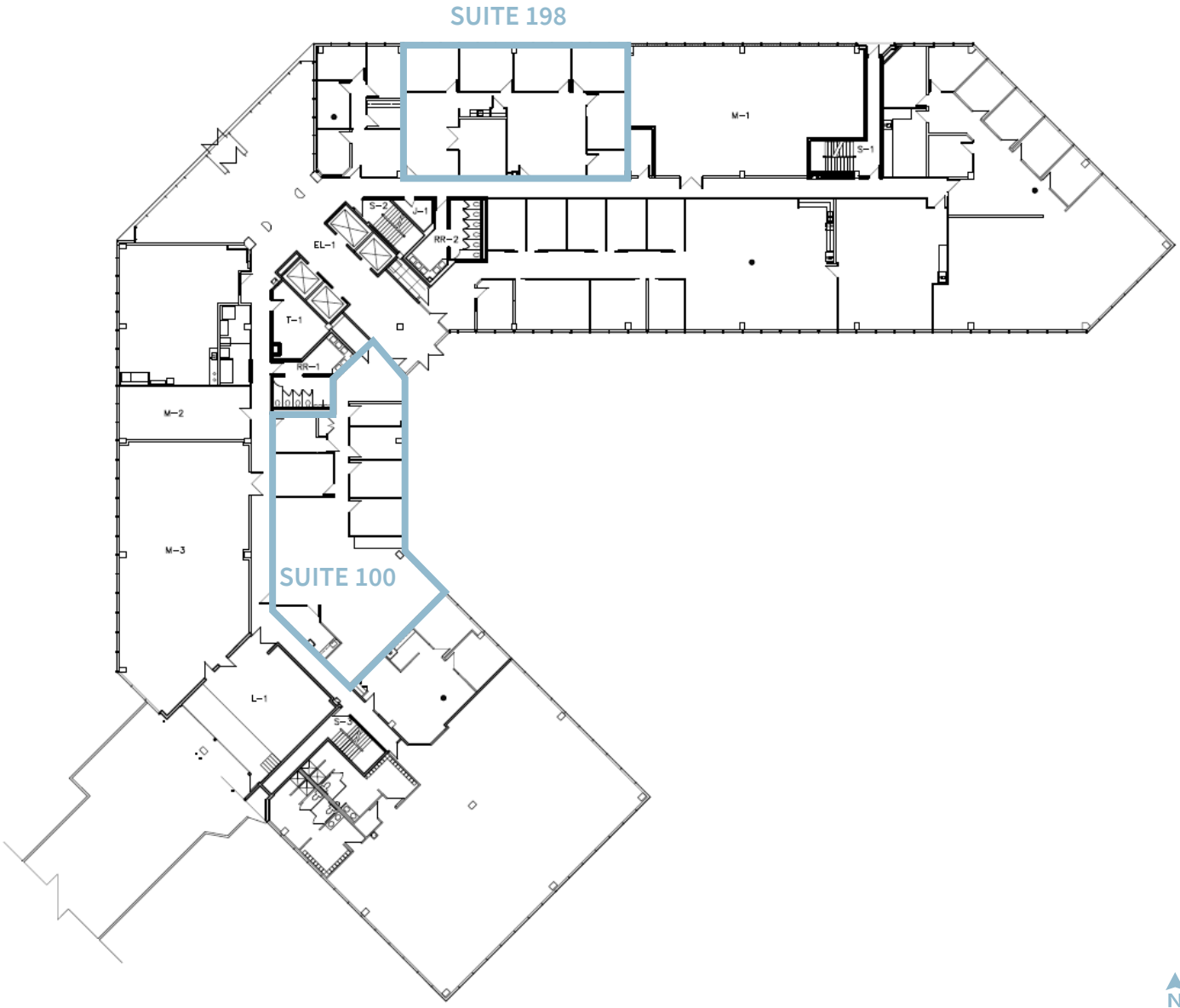
TENANT SPACES

TENANT AMENITIES



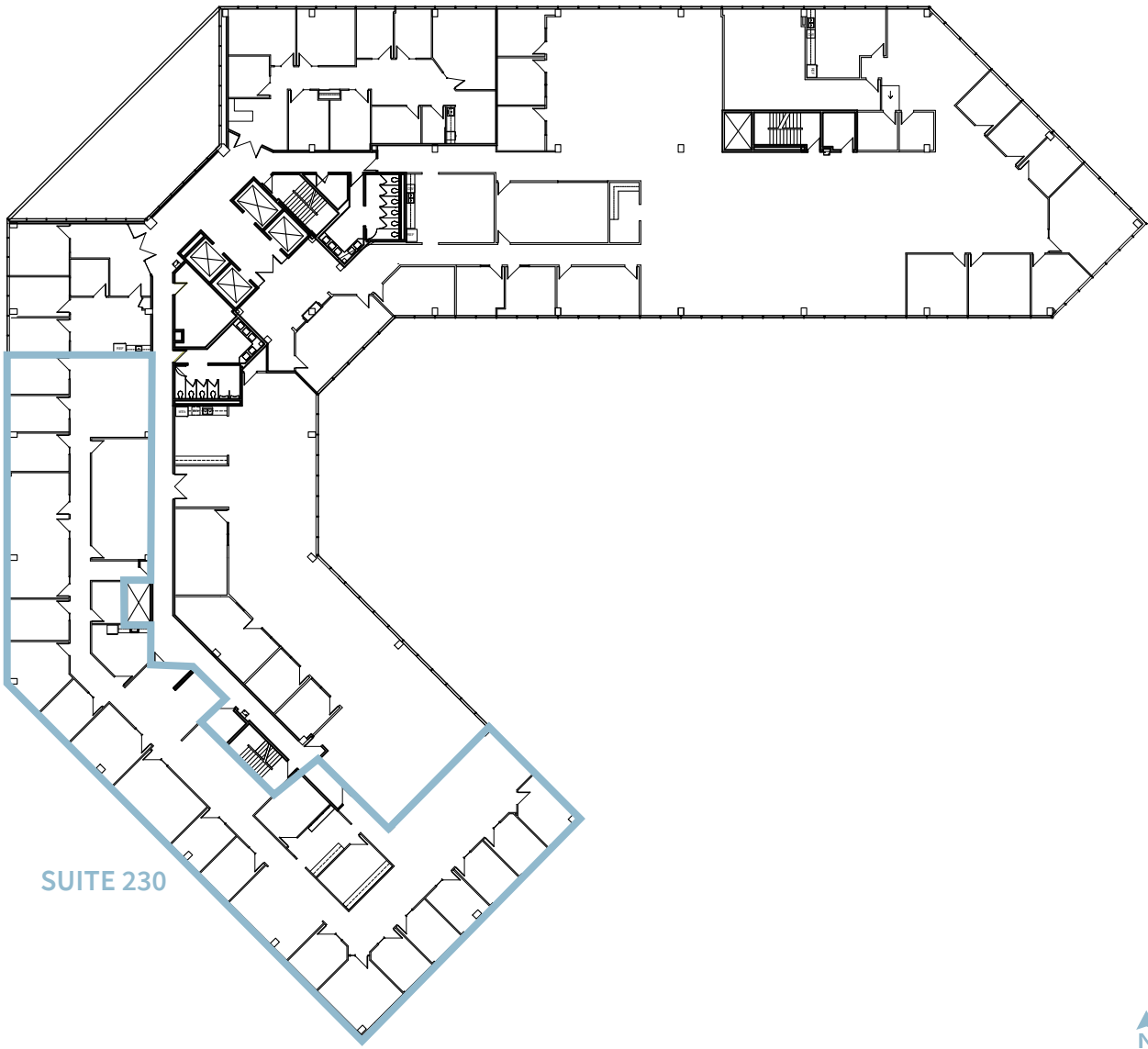
FIRST FLOOR

SUITE 100 - 2,970 RSF AVAILABLE
SUITE 198 - 2,339 RSF AVAILABLE



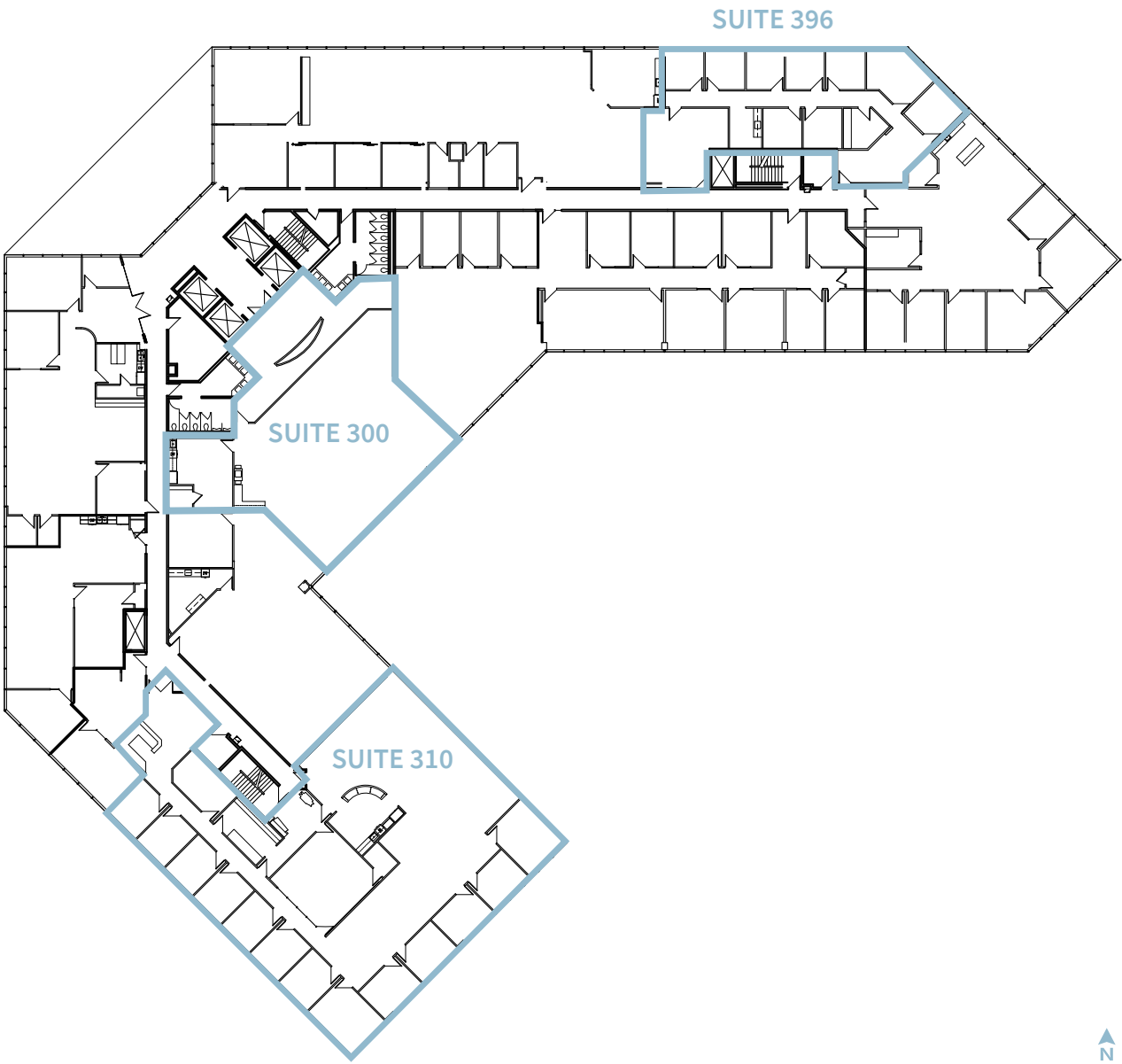
SECOND FLOOR

SUITE 230 - 8,553 RSF AVAILABLE 2/24



THIRD FLOOR

SUITE 300 - 3,297 RSF AVAILABLE
SUITE 310 - 6,295 RSF AVAILABLE
SUITE 396 - 2,444 RSF AVAILABLE

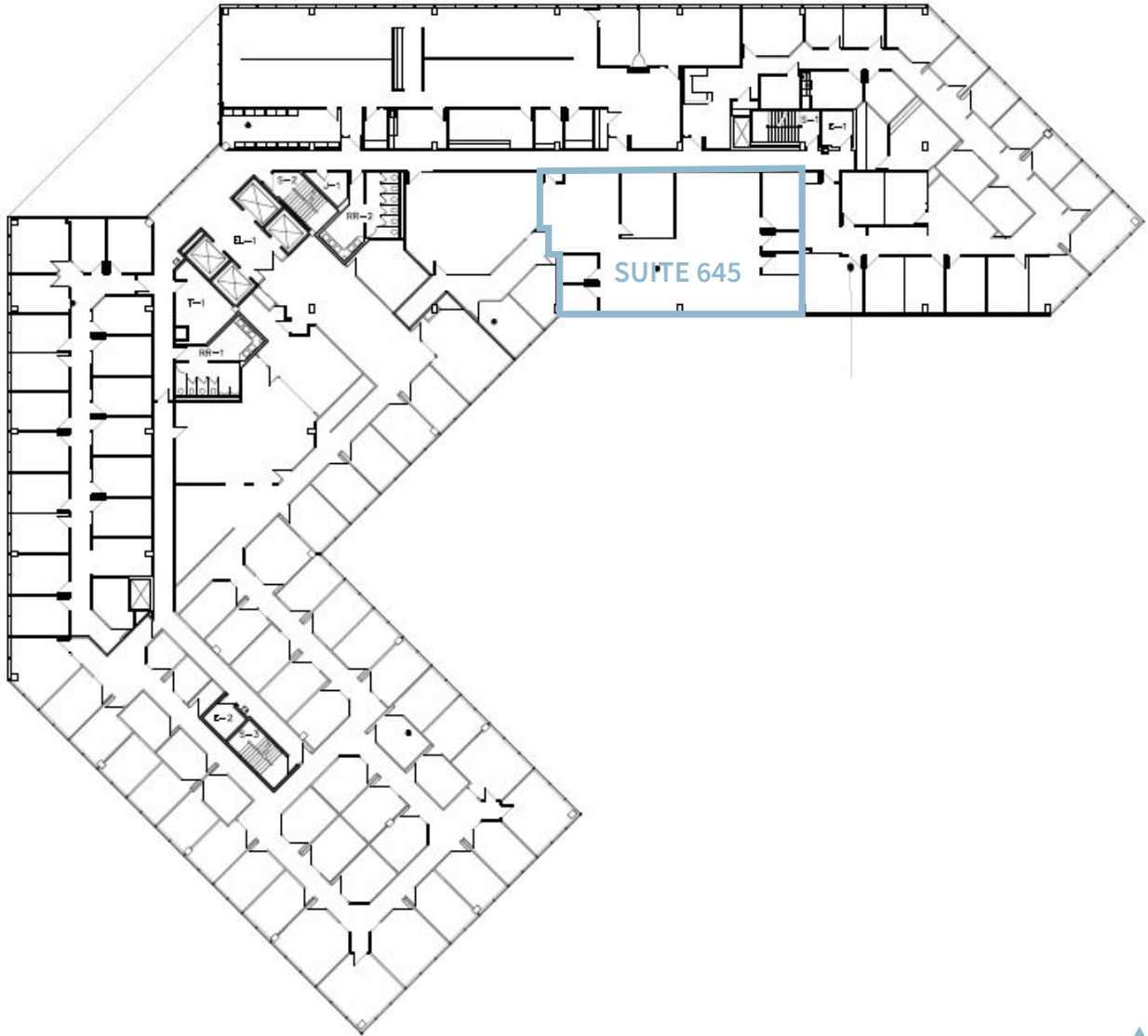


FIFTH FLOOR

SUITE 580 - 1,220 RSF AVAILABLE



SIXTH FLOOR
SUITE 645 - 2,486 RSF AVAILABLE



AMENITIES



Dining

1. Bob Evans
2. City Barbeque
3. Firehouse Grill & Brewery
4. Rhino's Frozen Yogurt & Soft Serve
5. Buffalo Wild Wings
6. Nanny Belle's
7. The Brown Dog Cafe
8. Sugar N' Spice Diner
9. Gold Spoon Creamery
10. TAHONA Taqueria+Tequila Bar

Hotels

11. Blu Restaurant & Bar
12. Apple Spice Junction
13. Fretboard Brewing Company
14. Through The Garden Restaurant
15. Sammy's Craft Burgers & Beers
16. QDOBA Mexican Eats
17. Marx Bagels
18. Starbucks
19. Molly's Cupcakes Baking Kitchen - Catering Kitchen

Recreation

1. Summit Park Dog Park
2. Summit Park
3. Blue Ash Golf Course
4. Blue Ash Recreation Center
5. Blue Ash Nature Park
6. Blue Ash Tennis Courts

CONVENIENTLY LOCATED



Near Summit Park District

- > A 130-acre first-class park featuring a community pavilion, event space, cafes, bistros, a large performance stage, an observation tower, walking paths and meadows with interactive programming and year-round experiences
- > Comprised of five distinct areas to work, eat, shop, live and play: The District, Carver Woods, Parkside, Daventry and Summit Park
- > The Neighborhoods at Summit Park offer luxury residential apartment living and single family homes designed for urban ambiance and connected to the region's top schools
- > Additional Summit Park assets include Woodland Nature Preserve, Northeast Market Pavilion and Wine Garden, playgrounds, nature playscape, skate park, sledding hill, rain harvesting lake and water feature, dog parks, trails and picnic areas



Todd Pease

+1 513 297 2506

todd.pease@jll.com

Michelle Klingenberg

+1 513 719 3703

michelle.klingenberg@jll.com

Britney Aviles

+1 859 743 7034

britney.aviles@jll.com

